

The Canberra Potter

INSIDE: New Board Members Winter School The Story of The Broken Hill Soda Kiln New Classes New Studio Holders & more...

Rob Linigen, *Porcelain cup*, glaze contains salvaged copper, quartz and window glass from the demolished home, cone 9 electric kiln firing with silicon carbide reduction.

Winter School 2017

GLAZE from Basics to Brilliance—a 5 day ceramics intensive with Rob Linigen and Maryke Henderson. Sat 15–Wed 19 July 2017 9.30-4pm

Based in the Blue Mountains, west of Sydney, Rob makes handmade pottery and teaches ceramics part-time at WSI, Nepean College. In his teaching Rob tries to influence by persuasion and example, allowing space for experimentation, reflection in the hope that students own imaginations may be exceeded.

Learn to make your own luscious surfaces that fit your forms and express your individuality. Through five days of practical hands-on learning you will make and test your own glazes at stoneware temperatures. Through understanding the basics of glazing you will be inspired to create your own glazes.

The course will explore:

- » increasing and decreasing shine
- » building colour
- » creating translucency and opacity
- » the impact of reduction and oxidation
- » how to apply glaze for maximum effect
- » the possibilities of found materials

Rob will be assisted by our very own all-round potter and soda firing expert Maryke Henderson who will share her unique insights into glaze techniques and their application to alternative firing practices.

more information page 3

Exceptional Upcoming Courses

Teapots Galore 2
with Rick Beviss
24 & 25 June
\$285 for members

Throwing Clinic
with Kaye Pemberton
1 & 2 July
\$285 for members

Glaze from Basics to Brilliance
5 day intensive
with Rob Linigen and
Maryke Henderson
Sat 15–Wed 19 July
\$465 for members

Treat yourself to one or all!
To secure your place phone
6241 7800



From the Director

Welcome to the June issue of The Canberra Potter. Winter's here—with a blast! I know because we've been busy organising a fantastic Winter School for all of you who've been crying out for a glaze-focused course. Well this is it—get in early as it's going to be a ripper. Rob Linigen knows his stuff, is a wonderful teacher and has an amazing personal story he brings to the school.

I'd like to thank the Board members Ian Hodgson and Jessica Coates who stepped down at the recent AGM for their tireless efforts in assisting to bring the long-awaited constitution to fruition and the guidance and wisdom they offered our organisation over their time on the board. We welcome new members Jane Jervis and Phuong Dang who will join ongoing members Velda Hunter, Russell Eade, David Leake and Jennifer Collier to govern Canberra Potters' Society and ensure our continuing success during their term.

At the AGM, Velda Hunter was elected President for another year. Congratulations, Velda.

We are looking forward to the arrival of our latest AIR, Janet Fieldhouse who arrives early in the month. Some other studio activity is afoot with co-tenants Jo Victoria and Lesley Lebkowicz moving into Studio 4 and Raj Reddy and Andres Caycedo shortly to occupy studio 5.

Staff and I are busily working on testing and populating the new website as we move closer to launch. I'm sure it will be an immense improvement to the way we promote and run our exciting facility.

Richard Thomas

Director

director@canberrapotters.com.au

Introducing two new Board members

At the recent AGM we were very pleased to welcome two new members onto the CPS Board.

Phuong Dang

Phuong has previously worked at QL2 Dance (an artsACT Key Arts Organisation) as an administrative assistant. She has been an active member taking classes in the past 2 years and her child has participated in children's classes. Inspired by the classes, knowledge and resources that we offer she would like to contribute to our vision for current and emerging potters.

Jane Jervis

Jane has been a member of CPS for over 5 years and is currently CPS class participant. In 2015 she was a volunteer during the Triennale—Stepping UP and has also volunteered with the Salvation Army on a regular basis. Jane has completed courses with the Australian Institute of Company Directors and in her professional life has experience in secretariat roles, policy review, stakeholder communication, training, planning, leading and supervising staff. She will contribute strategic, governance and risk skills to the board and is looking forward through her collaborative nature to add value to the CPS community.

Board & administration

Board

Velda Hunter **President & Chair**

Russell Eade **Treasurer**

Jennifer Collier

David Leake

Jane Jervis

Phuong Dang

Administration

Director Richard Thomas

Program Manager Sara Hogwood

Education Program Manager

Jo Townsend (acting)

Education Office Assistant

Bhavana Moylan

The Canberra Potter is published monthly February—December.

ISSN 2207-9475 (Online)

Contributions are welcome.

Please email copy and images with captions to the editor:

editor@canberrapotters.com.au

Next Newsletter Deadline

Tuesday 27 June 2017

Graphic Design: Nina Davis

Contact us

Canberra Potters' Society Inc

Watson Arts Centre

Aspinall St, Watson ACT

02 6241 1670 general enquiries

02 6241 7800 classes

PO Box 7021

Watson ACT 2602

Gallery/Shop hours

Thursday—Sunday

10—4 pm

ABN 65 491 135 689

Winter School

From page 1

GLAZE from Basics to Brilliance—a 5 day ceramics intensive with Rob Linigen and Maryke Henderson. Sat 15–Wed 19 July 2017 9.30-4pm

Enrolment Information Enrolments have now commenced. Please book early as places for this school are strictly limited! Participants will be expected to provide a quantity of bisque fired test rings in their preferred clay body appropriate for cone 9 for this workshop. Numbers must be finalised by July 7 or the School will not run.

This course requires that participants have some knowledge of ceramic arts practice.

For details on course and cancellation policies visit canberrapotters.com.au or call 6241 1670 or 6241 7800.

Bookings 6241 7800 or email classes@canberrapotters.com.au

Cost: \$490 non-members,
\$465 members



Rob Linigen, hand crushing bone ash for glazes.



Rob Linigen, porcelain cup with glaze that includes salvaged copper, quartz and wine glass bottles. Electric kiln.



Rob Linigen, Mug with weed ash glazes, oxidation firing.



Rob Linigen Stoneware cup, Chun style glaze includes ash, salvaged quartz and chicken wishbones. Gas reduction firing

We're Hiring!

Are you a gun Technical Assistant? Do you have outstanding expert knowledge of kilns, wheels, glazes, clays and general workshop equipment? Then we need you! The Technical Assistant is responsible for the smooth and safe operation of the facility's key infrastructure. Using your knowledge of pottery and experience of ceramic arts practice you will be expected to maintain kilns, wheels and associated technical equipment to ensure the timely delivery of technical services offered to our members, students and resident artists.

Position Available Technical Assistant

Location Watson, ACT

Appointment Permanent Part-time position with a 3 month probation period. On-going employment is dependent on continuation of funding support from ACT Government.

Remuneration & Conditions Hourly Rate \$30 (plus super)

Hours of work 6hours per week

Reports to Director

A full duty statement and application requirements may be obtained from our [website](http://canberrapotters.com.au).

Applications to

director@canberrapotters.com.au

Subject Field: TA Position

Applications close 13 June 2017

A Soda Kiln for Broken Hill

During the Triennale Market Day at the NGA in 2015 I was approached by a group of Broken Hill potters, keen to learn more about soda fired surfaces. After a lot of discussion and emails it was decided to modify an old gas kiln for soda use.

In April, with 150kg of refractory castable plus 25kg of soda ash holding my car snugly onto the road, I left for the 1130km drive to 'the Hill' in the company of my labrador, Soda. The huge wide landscape with stormy clouds made me feel small and insignificant. It rained on and off until Wentworth and then the country rapidly became very dry, red and dusty.

The Broken Hill Potters Society has premises in a relocated and well-appointed church building. The main body of the church is their handbuilding room, library, and collection area; the vestry their throwing space. Behind the building is a substantial shed which houses 4 electric kilns and a glaze area. Another shed houses a gas kiln.

While I had received images of the kiln I was surprised at what I found after removing a couple of hay bales. The under-floor flue and burner channels were unlike anything I have ever seen before. We removed the floor and proceeded to rebuild it and the fire-boxes. We cut and lined soda ports and spy holes, drilled anchor points into the soft insulating fire bricks and plastered the castable over all the surfaces. The existing flue was made from castable so we decided to leave it as it was with an added extension to increase the draft.

Following a quick half-day demonstration workshop we left the castable to dry (which needed to be slowed down as the weather was so very hot and dry) over the Easter week-end. A member gave me a key to her 'shack' on the Menindee Lakes. Soda and I walked, swam, bird watched and photographed the wonderful surfaces of the Murray River Red Gums, a wealth of inspiration for the next body of work. Then it was back to work.

Burners were sorted, shelves and props were cut and washed, inside of the chamber was coated with a high alumina wash and a variety of wadding recipes mixed. Then the tedious job of packing began, each piece of bisque-ware carefully placed on wadding, shells or local quartz rocks with consideration to placement to allow the soda vapour to flow over the work, leaving its mark.

The kiln fired well. Soda was introduced at 1240 degrees over a 2 hour period followed by a good soak. While the kiln cooled I went sight-seeing. There is such an abundance of art-work to see and I definitely required more than a day to do so.

Then came the telling-time. A sense of apprehension always overcomes me as I open the kiln for the very first time. The kiln had cooled slowly and the rain had started to fall (the first since January) as we unpacked some very hot pots. Soda vapours had evenly dispersed throughout and the results were good for a first firing. As a soda kiln becomes seasoned with use and as the operators become familiar with the process, results will only get better.

It was time to say goodbye to a great group of potters and new friends. The short taste of country life brought

back many memories of my years living in the bush, of the hardships and challenges of isolation for the women, but also the beauty of the people and the landscape.

Maryke Henderson



The Broken Hill Potters Society working with Maryke build the soda firing kiln. Photo: Kara de Groot as published in Broken Hill's newspaper.



Satisfying results from the first soda firing

Friday Night Supper Club

30 June 6pm
Gold coin donation

The last day of the financial year brings you the opportunity to get together with fellow clay addicts over a glass or two and a nibble or three, and hear Abbey Jamison talk about her work. Abbey has been our EASS Artist in Residence here at Watson, working on soda firing her 'comfort pots'. What better way to spend a chilly EOFY.



Pieces from Raw Verse, 2016.

Fabulous Classes Coming Soon

Check out our new line-up of classes for children and adults, based on your feedback. These new classes give you more choices, to suit you and your family's needs.

Bookings are essential
Call 6241 7800 or email classes@canberrapotter.com.au

Intro intensives

We are offering 2 intensive introductory courses over the term break. These classes cover everything that is in the 7 week course in 3 and a half days. You will learn a variety of handbuilding techniques, work on the wheel, glaze your pots and even do a raku firing.

\$320 fee includes materials and firing.

Course 1

Saturday 1 July	9.30am–4.30pm
Sunday 2 July	9.30am–4.30pm
Monday 3 July	9.30am–12.30pm
Friday 14 July	9.30am–4.30pm

Course 2

Saturday 8 July	9.30am–4.30pm
Sunday 9 July	9.30am–4.30pm
Monday 10 July	9.30am–12.30pm
Friday 21 July	9.30am–4.30pm

Holiday Fun for all the Family

We have new classes for children these winter holidays. Each week of the two week school holidays we will be offering 3 courses. Course fees cover all materials and firing.

Family fun with clay

Monday 3 July & Tuesday 4 July or
Monday 10 July & Tuesday 11 July
9.00am–12.00pm both days
\$140 for the 2 mornings

- » Create clay creatures
- » Make and decorate plates with images of your favourite animals or movies
- » Designed for family groups or unaccompanied children—all welcome
- » Minimum age 6 years old

Clay Day

Wednesday 5 July or
Wednesday 12 July
9.00am–4.00pm
\$180 for the day

- » Have a go on the potter's wheel
- » Make a platter to amaze your friends
- » Create a creature for your garden
- » Learn how to decorate and refine your pots

- » Take home your own raku pot—dramatically transformed by fire
- » Bring your own food and drink
- » Minimum age 8 years old—adults welcome to enrol with the students

Working on the Wheel

Thursday 6 July & Friday 7 July or
Thursday 13 July & Friday 14 July
9.00am–12.00pm both days
\$140 for the 2 mornings

- » Spend 2 mornings learning to use the potter's wheel
- » Suitable for beginners and continuing students
- » Design, refine and decorate your forms
- » Minimum age 8 years old

Curl up with a good book this winter: new titles in the CPS Library selected for you

New Ceramics Is a beautifully-produced ceramics bimonthly magazine from Germany (in English). Concentrating on current trends in European ceramics and pottery, the magazine features high quality images and articles.

Ceramic Jewellery by Joy Bosworth is an easy-to-read informative guide to this growing area of the ceramic world. It covers how clay can be combined with other materials such as metals, fabrics and stone to create unique jewellery pieces. It's well illustrated and features work from many international artists. Joy previously wrote *Ceramics with Mixed Media*.

Colouring Clay by Jo Connell is another in the fine series Ceramic Handbooks and focuses on introducing colour into clay and using it in decorative ways. It includes how to achieve textural effects, inlaying and laminating, sprigging and agateware to name but a few of the topics covered.

Ceramic Transfer Printing by Kevin Petrie is an informative investigation of the ceramic transfer. It explores the history, visual qualities and various application methods. From low tech to complex, transfer methods are fully explained including specific material requirements.



Teapots galore 2 with Rick Beviss

Saturday 24 and
Sunday 25 June

There is still time to book in for our teapot guru's workshop on handbuilding teapots. You'll learn about working with extruded slabs and lots of clever tricks and tools to improve your forms. Have a look at the pictures of the last workshop on our [YouTube channel](#).

Bookings: 6241 7800 or email classes@canberrapotters.com.au

Cost: \$285 for members



Throwing Clinic with Kaye Pemberton

Saturday 1 and
Sunday 2 July

Supremo Kaye Pemberton is running a 2 day workshop for competent throwers to brush up on techniques and resolve issues that they are encountering with their techniques.

Bookings: 6241 7800 or email classes@canberrapotters.com.au

Cost: \$285 for members



Welcome New Studio Holders

The CPS/WAC Studio Tenant Selection Panel has met to consider the latest round of studio tenancy applications. We are very pleased to welcome **Jo Victoria** and **Lesley Lebkowicz** to Studio 4. I'm sure most will be familiar with these artists as they have been active participants in Canberra Potters activities for a number of years.

Jo Victoria works primarily with porcelain and her recent work involves mixing organic material in porcelain slip and firing to reveal remnant shells. It's a developing experimental process that explores the translucent qualities of porcelain. Jo has recently returned from an artist residency in Guldagergaard, International Ceramics Research Center, Denmark and is developing an independent art practice.



Lesley Lebkowicz has been a practising ceramic artist for over three years. A keen participant in continuing education courses offered through Canberra Potters, she has reached a point where she wishes to focus her creative energy toward developing a creative studio practice. Her first goal will see her working toward a group exhibition titled *Changes* which will take place at Watson Arts Centre Gallery in July.



We're sure the creative environment, warm community and superb Watson Arts Centre facilities will ensure both these artists achieve their creative ambitions.

We welcome studio holder enquiries year round and from time to time studio places do become vacant. For this reason we keep a current waiting list. Application details can be found on our website.

Richard Thomas (on behalf of the Studio Tenant Selection Panel)

For Sale

Never used FIRE BRICKS FOR SALE
Price negotiable. Prefer to sell together.

425 standard straight bricks (4.36kg; 230x115x75mm ea): \$1,275 ONO (\$3 ea; RRP \$3.65ea. Save \$276.25)

8 floor tiles (9.8kg 300x300x50mm ea) \$120.00 ONO (\$15 ea; RRP: \$16.40 ea. Save \$11.20)

Location: Cooma NSW
Contact: Lisa 0411 218 069



Exhibition Review

This Way: Heidi Strachan

**Watson Arts Centre
Until June 11**

This very strong and cohesive exhibition fills the space of the Watson Arts Centre Gallery. Canberra Potters' decision to offer the EASS award to only one recipient this year, rather than 2 or more, has certainly benefitted both the gallery and the artist.

At first glance the paintings on the wall seem to overshadow the ceramic forms, but if the viewer spends a bit more time or on a second visit, the relationship between the 2D and 3D works becomes clearer.

Painting #25 stands out. It is almost luminescent and stands alone. The painting references the Korean Buncheong-ware which Heidi explored in her Honours year at ANU. It seems to be the starting point for this new body of work, inspired by the daily commute to Strathnairn Homestead along Coppins Crossing Road, where Heidi recently undertook a residency and where these works were made.

Following the exhibition round the room, one can see the development of confidence in style and technique. The mark-making on both paintings and ceramic forms becomes bolder. Painting #14 *No Right Turn* is a good example.

In contrast, Painting #7 *Playground*, which was part of Heidi's graduating work, is pleasing but in comparison to the other paintings from this year, the marks seem hesitant, less confident.

We felt that the closed ceramic forms were more resolved than the open cylindrical vessels, where the symbolism and marks made within the forms were a departure from those on the outer surface. The base of these interiors display finger marks, depressions and texture (perhaps referencing the bottom of an empty dam?)

This exhibition is well worth visiting, and it warrants a bit of time being spent to take in both the bigger picture and the boldness of the large-scale works, as well as getting up close to examine the textures and marks in detail.

It is a beautiful and well-resolved body of work. The exhibition continues until June 11.

Zoe Slee, Jo Victoria, Fran Romano



Diary dates

June

**Teacher Professional Development
14 June**

**More Teapots Galore
with Rick Beviss
24 & 25 June**

**Friday Night Supper Club
30 June 6pm @ CPS**

July

**Throwing Clinic
with Kaye Pemberton
1 & 2 July**

**GLAZE from Basics to Brilliance
with Rob Linigen &
Maryke Henderson
15–19 July 9.30am–4.00pm**

August

**Australian Ceramics Open Studios
Where? Your place!
19-20 August**

Watson Arts Centre is a Key Arts Organisation supported by the ACT government and run by Canberra Potters' Society.

We offer:

Classes for children and adults across all levels of ceramic practice. Workshops, Summer Schools and Kids' Holiday classes are available too.

Studios where tenancy applications are always welcome from emerging and established ceramic artists.

Artist-in-Residence program including studio and residence facilities to national and international visiting artists.

Gallery hosting a ceramic focused exhibition program.

Shop with a range of pottery and ceramics to suit all tastes and budgets.

The gallery and shop are open Thursday to Sunday 10am–4pm and most public holidays.

For further information on all programs, events and available facilities please visit

canberrapotters.com.au

Exhibitions

This Way
EASS Exhibition: Heidi Strachan
Watson Arts Centre Gallery
Until 11 June



Heidi Strachan: *The Bottle*

2017 Student/Teacher Exhibition
Watson Arts Centre Gallery
22 June – 9 July
Presentation of awards Sunday 25 June 2pm

This annual event is our opportunity to celebrate the skills and creativity of the many students—adults and children—who attend classes at Canberra Potters. It can be quite daunting putting your work on public display so participating in this exhibition is not mandatory but instead we leave it up to the students to decide when they feel ready to exhibit. Last year’s exhibition saw some wonderful work by Georgie Bryant’s introductory class students that showed just what can be achieved in a seven-week course. Will we see entries this year from any of these students who have continued beyond their introductory course? Will we see entries from some of the current cohort of introductory students? As always, accompanying the student exhibits will be works by our wonderful teaching staff.



Stephanie Johnston, *Pit-Fired Male & Female Torsos*, 2016 Best Overall award

Emerging Contemporaries
Jo Victoria and sixteen other
craftspeople
CraftACT
Until 15 July

Jo was awarded this exhibition in last year’s CPS Members’ Exhibition



Woven in Winter
Sturt Gallery Mittagong
11 June – 23 July
Woven forms in basketry, sculpture, textiles and ceramics by contemporary artists.



Underneath Tomorrow
Steve Roper (ceramics), Gemma
Bonshek Kane (ceramics), John Hart,
and Saara March
M16 Gallery
21 Blaxland Crescent Griffith
Until 2 July
Opening Thursday 15 June 6pm

Underneath Tomorrow explores the subconscious imagination. The works all share elements of processing memories, childhood experiences and family myths. Hart pursues ideas around knowledge, truth and uncertainty. Roper’s perennial investigations into the subconscious and memory lead him on this occasion to depictions of devils, demons and infernal scenes. He represents these in a cartoon-like style to evoke childhood fears and anxieties and

their recurrence in adult life. Kane’s sculptures explore the intrinsic connection between people, place, and memory. March uses a diverse range of assembly techniques in exploring thoughts and memories

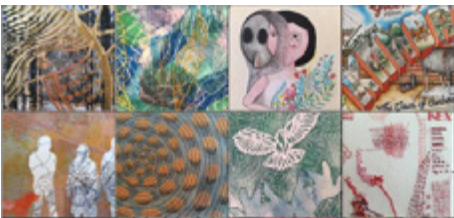


PIN 7
ANCA Gallery
1 Rosevear Place Dickson
Until 9 July
Opening Wednesday 28 June 6pm
ANCA’s infamous wearable miniature art exhibition is back again and will include an eclectic mix of brooches and pins by local and interstate artists in many media including ceramics.

Opportunities

TRACES II: An Open Exhibition in
A5 Format
Belconnen Arts Centre
22 September – 15 October
Entries close Friday 28 July 4pm

As we journey through life, we leave traces of where we have been. We all have a connection to a place, a story or memory. Artists are invited to respond to the theme of: speaking of our sense of place; our connection to it; the stories and memories we have gathered. We are encouraging you to investigate your ideas of connection and memory playfully, thoughtfully, radically, or somewhere in between as you explore the people, your relationships, places, adventures and environments that you cherish.



In 2016 the Members’
Exhibition was supported by

