



The Canberra Potter

The Newsletter of Canberra Potters' Society Inc.

INSIDE: Floriade (revisited) Gallery Call Out Kiln Firing Procedures Kelly Austin Caroline Walker-Grime Open Studios Opportunities

Kelly Austin, *stilled composition #*, wheel thrown stoneware and porcelain & terracotta glaze, 2016.

Flower Power



It's been a long time since our last involvement with Floriade – 19 years in fact. Have a look at the photographs on page 3 and see if you recognise some of the sculptural pieces that still adorn the WAC gardens.

And so, from 1997 to 2016...artsACT recently offered some of its Key Arts Organisations (yes, we're one) the chance to participate in Floriade this year through the provision of a shared marquee that can be used for sales, exhibitions, demonstrations, etc. This was too good a chance to pass up and we have agreed to share the marquee

with Strathnairn Arts on the first and last weeks of Floriade, which this year runs from 17 September to 16 October.

We are now seeking expressions of interest from members who would be interested in participating. Currently we envisage a scenario with one or two potters per day (or every other day, depending on Strathnairn's plans) who would demonstrate hand-building or wheel-throwing to members of the public. In return for their time, they would have their work for sale for one of the two weeks in the sales area of the marquee. Sales, class enquiries, enrolments, etc will be handled by CPS staff and/or volunteers.

If you're interested in participating let us know at: admin@canberrapotters.com.au by 24th July (or call the office on 02 6241 160). There's no commitment yet but once we know the level of interest then further details can be worked out.

The Call Out Issue

EXPRESSIONS OF INTEREST SOUGHT

Canberra Potters' at Floriade

An opportunity for members to exhibit, sell and demonstrate. See this page.

Open Day Market Stalls

This coming Open Day consider joining our artists marquee. See page 7.

2017 Exhibition Proposals

A call to professional artists with a ceramic focus to exhibit in our Watson Arts Centre Gallery. See page 3.

CanberraPotters'Society
WatsonArtsCentre

1 Aspinall Street Watson, PO Box 7021 Watson ACT 2602
General Enquiries 02 6241 1670 Classes 02 6241 7800 www.canberrapotters.com.au



Like us on Facebook



Supported by





From the CEO

Welcome to the July issue of The Canberra Potter. Perhaps we should call it the 'Call Out' issue as there are lots of opportunities for member involvement over the coming months.

artsACT has presented us with a wonderful opportunity to become involved with one of the regions premier tourism events—Floriade. A chance for you to exhibit, sell and demonstrate to many thousands of local and interstate visitors.

This year we hope to keep the selling theme going by offering you the chance to participate in our Ceramics Art Market. Part of our very own Open Day it presents a fresh take on our annual members sale and promises to be a great promotion for our ever popular community event.

To our professional members I urge you to consider having your next exhibition at Watson Art Gallery—which is growing its reputation as the home of ceramic arts in the ACT region.

As always a busy schedule of coming events with recent special courses and Winter School all booked out. The exhibitions by members always impress and this month doesn't disappoint. If you are quick you can still catch Julia Yang and Peng Qian at the School of Art Gallery presenting their Visual Arts Graduate Season exhibition.

I'm delighted to see the vibrancy around our studios during these cold months and so many of you involved in TACA's Open Studios weekend coming in August.

Thanks to all those braving the cold to attend our Friday Night Supper Club events too. I'm looking forward to hearing Steve Williams as he does a show, tell and taste about his Winter School extravaganza!

Stay warm!

Richard Thomas
CEO



From the Chair

Greetings everyone. I'm very happy to report that it's not only business as usual at Canberra Potters, but we continue to go from strength to strength. I'm proudly looking forward to attending the exhibition opening at 2:00 pm this Sunday 10 July 2016. It's a first for us – the showcase of works from our Senior Pottery Classes, and promises to be a delight. The classes were made possible by generous funding from the Community Participation Group, ACT Government Community Services, which granted us one of the 2015-16 Participation (Seniors) Grants. Thanks to Maryke Henderson and Suzanne Fox – both skilled ceramicists, who led the classes.

The event also marks the opening of the *2016 Student Teacher Exhibition*. We can anticipate a great show of works displaying the skills and imaginations of many of our members of all ages. I've had a bit of a sneak preview and know that exhibition attendees won't be disappointed. The big question is - who will win the prizes this year?

A new addition to the notice boards around the Canberra Potters campus is a calendar of events for the coming year. It's on the wall in the member's tea room. So do pop in and have a look at what is scheduled, and pencil the dates into your personal diaries. After the next Board meeting – 12 July 2016, we will be step closer to determining consultation with members regarding amendments to the Constitution. This will be quite straight forward, and opportunities will be on offer for you to come along and discuss changes.

I hope that you're enjoying your ceramic endeavours as much as I am this month. The kiln room, or my studio as the kiln cools is definitely the place to be – it's summertime there, and T-shirt weather!

Velda Hunter
Chair
velda@tpg.com.au

Board & administration

Board

Velda Hunter **Chair**
Graham Durant **Treasurer**
Jessica Coates
Ian Hodgson
Jennifer Collier
David Leake
Zoe Slee
Russell Eade

Administration

CEO Richard Thomas
Workshop Manager Chris Harford
Program Manager Sara Hogwood
Education Program Manager
Fran Romano
Education Office Assistant
Bhavana Moylan

The Canberra Potter is published monthly February—December.

Contributions are welcome. Please email copy and images with captions to the editor:

editor@canberrapotters.com.au

Next Newsletter Deadline
Thursday 28 July 2016

Graphic Design: Nina Davis

Contact us

Canberra Potters' Society Inc
Watson Arts Centre
Aspinall St, Watson ACT
02 6241 1670 general enquiries

02 6241 7800 classes

PO Box 7021
Watson ACT 2602

Gallery/Shop hours
Thursday—Sunday
10—4 pm

ABN 65 491 135 689

Floriade 1997



Did you know or were you part of our first Floriade activity? When we were invited to be part of this years Floriade festival little did I know that we'd had past involvement. A search through our archive revealed a well documented project by some very enthusiastic members. It also explains the origin of some of the mystery pieces scattered around our precinct.

It was described as "A Garden Handcrafted in Clay" and formed part of the exhibition component of Floriade in 1997. The project statement reads:

This garden was designed by members of Canberra Potters' Society, who then handbuilt, decorated and fired

its components. Potters met each Tuesday and Sunday to coil and decorate larger pieces, guided by Kayleen Watts, who was responsible for this aspect of the design. Rocks and flowers were made by individual potters, many of whom worked at home. Most pieces are once fired with a thin clear glaze coating the larger pieces and terracigillata or slips coating rocks and flowers.



We can identify some of the participants Nyla Walkear, Christine Pearson, Marlene Flanagan and Judy MacDonald. Apologies for those we can't credit but if you recognise the faces please let us know.

If anyone is interested in restoring the parts still with us to their former glory let us know and we'll select an appropriate space for their installation. now that we'd had past involvement.



Gallery Call Out 2017

Watson Arts Centre is calling for proposals for its 2017 exhibition program. The spacious gallery presents exhibitions in various media but the program has a focus on ceramics. It aims for quality, diversity and professionalism in its presentations and welcomes proposals for solo and group exhibitions from emerging, mid-career and established artists. Exhibition proposals are considered on their merit and with regard to the availability of dates to present a diverse gallery program of high standards.

Located in the North Canberra suburb of Watson, the gallery is easily reached from Northbourne Avenue/Federal Highway and has ample free parking space. The gallery's standard opening times are 10am-4pm Thursday to Sunday (and most public holidays). Exhibition minding is undertaken by staff.

Submissions for our 2017 gallery program are open until 30 July 2016.

Full details and an application form are on the gallery page at www.canberrapotters.com.au.

Artists are welcome to contact us to discuss their proposal prior to submission:

wcac@canberrapotters.com.au or 02 6241 1670.



Michael Keighery, *Dead Man's Penny* (detail), 2015

Hiring & Firing

We have recently updated our procedures for hiring and using our kilns. If you are a frequent user or perhaps considering hiring a kiln for the first time these procedures will assist you in completing a successful firing.

Our kilns are available for hire by members who hold a current CPS kiln licence for the type of kiln being hired. To obtain a kiln licence, a member must undertake a training session and satisfy the trainer that they are competent to fire a kiln. Kiln licences are not everlasting and if a user has not fired a CPS kiln for a certain length of time they will be required to undertake a new training session to get their licence renewed. CPS membership must be current at the time of a kiln hire/firing.

The procedural updates have resulted in three principal changes:

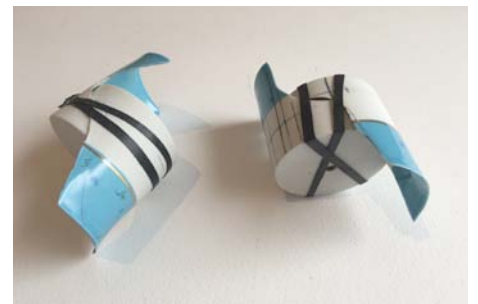
- 1 We have new kiln hire conditions of use – if you are a current kiln hirer, expect to receive a copy of these new conditions soon.
- 2 As always, kilns must be booked in advance but from now on only individual firings may be booked, ie a kiln cannot be booked for, say, a block of 7 days with the intention of doing multiple firings in this period; if you want to do multiple firings, they must be booked individually.
- 3 Kiln hire is now invoiced monthly and invoices are payable on receipt. Firing details must be accurately recorded in the relevant kiln log, including start and end meter readings, number of CPS cones used and, if a shared firing, the name of each hirer and their percentage of the load.

If you'd like to discuss your next firing or have any questions regarding these procedures please contact our Workshop Manager



French Connection

Recent WAC studio holder and much loved kid's class teacher Jackie Lallemand has been travelling in France during 2016. She has been busy building on her French ceramic art connections during her stay and was kind enough to tempt us with these images. Unfortunately technical detail was scant but we think the images speak for themselves. Enjoy!



Member Exhibitions



Caroline Walker-Grime—*A Potted History*, 2016

A Potted History
 Caroline Walker-Grime
 M16 Gallery 2
 16 June–3 July 2016

A small and perfectly formed solo show by CPS member Caroline Walker-Grime was recently held at M16. Works were presented on uniformly treated kitchen tables evoking a familiar and personal response. The following text is from the supporting artists statement.

My mother died in Scotland last year. Together with the great loss of the death of a parent the sadness is compounded by the disposal of a lifetime of personal possessions and collectibles, very few of which I was able to bring home to Australia. As a maker of objects, it was very hard to dispose of things rich in nostalgia that provided a backdrop in my mothers home throughout my life.

I have made these pots as a tribute to a mother's life and to her precious collection of what would probably now considered 'knick-knacks'. In

particular, she owned a large number of Goss pieces, bought for her over many years by my stepfather, which have inspired me to make groups of small pots of different shapes. Most of us with parents of her generation would be familiar with the collections of ceramic objects, tea services and trinkets from holidays. There is an interesting move these days to clear all 'clutter' from our houses; I think this has removed evidence of our 'history' and de-personalised our home environs in some way.

I have used images and ideas on my pots to reflect my mother's Scottish Highland background and life, her overseas travel to the West Indies as a professional nanny, her lifelong knitting prowess and her eventual death in a nursing home after a debilitating stroke two years earlier.

Visual Arts Graduate Season
 Kelly Austin
 Master of Philosophy/Ceramics
 School of Art Gallery
 15–25 June 2016

An exhibition of work by, graduating student and CPS member, Kelly Austin was held last month at the School of Art Gallery. Kelly is well known to us at CPS as one of our teachers and regular participant in our Student Teacher exhibitions. We extend our congratulations to Kelly on her graduation and what was an exceptional exhibition. The following insight is taken from the artists statement and reproduced with permission of the artist.

My work combines opposing wheel thrown forms; the vessel and non-vessel, the familiar and non-familiar, and the practical and abstract to extend the perception of three dimensional objects associated with



Kelly Austin assorted works, 2016



Kelly Austin assorted works, 2016

practical use. This combination occurs in still life painting and my practice investigates what happens when it is brought into three dimensions.

The objects are unified by their symmetry around a central axis, the basis of wheel thrown form. I use colour and the placement of objects to give a sense of harmony and balance. A range of ceramic materials is used to disrupt their cultural status; the preciousness of porcelain sits next to earthen terracotta. I am interested in the tension between the tactility of my work and its display in the art gallery context.



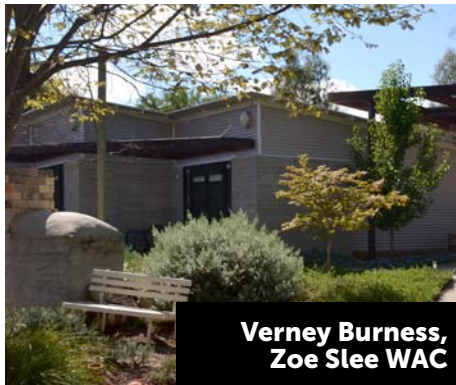
Caroline Walker-Grime—*A Potted History*, 2016



Kelly Austin, *stilled composition*, wheel thrown stoneware and porcelain & terracotta glaze, 2016.

TACA Open Studios 20–21 August

www.australianceramicscommunity.com



**Verney Burness,
Zoe Slee WAC**

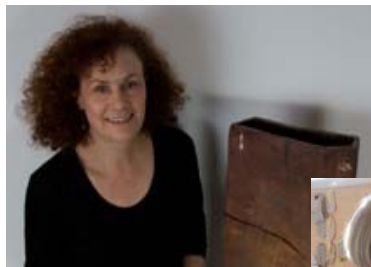
Several members are taking part in this years TACA Open Studio event on the 20-21 August. The Watson Arts Centre is home to a number of artists who have studios on-site and include emerging, mid career and established artists who will be displaying and selling their work. Artists include Isabelle Mackay-Sim, Richilde Flavell, Lia Tajcnar, Fran Romano, Verney Burness, Zoe Slee, Rick Beviss and Chris Harford. Please visit the TACA website to get more information on participating artists and their studio locations.



Fran Romano WAC



**Maryke Henderson
Evatt**



**Jacqueline Lewis
Watson**



**Velda Hunter
Evatt**



**Kaye Pemberton
Ainslie**



**Moraig McKenna
Ian Jones
Gundaroo**



Rick Beviss WAC

**Richilde Flavell,
Isabelle Mackay-Sim,
Lia Tajcnar
WAC**



**Monika Leone
Mawson**



**Joanne Townsend
Weetangera**



**Chris Harford
WAC**



Anne Masters Watson

CPS Open Day Call Out

23 October may seem a long way off but if we want to make this one of our best Open Days ever then we need to get planning underway. We're fortunate that the members who were involved in organising the 2015 Open Day are keen to be involved again but if you have some ideas and would like to be in right from the planning stage then contact:

Velda Hunter velda@tpg.com.au

Potters' Market – seeking expressions of interest

One of the ideas we have to give 2016 a bit of a makeover is a potters' market. This is still in the ideas stage but we're keen to know if there's enough interest to take it further. Currently it's envisaged that:

- We'll have a marquee somewhere at the front of the premises (probably to the right of the building).

- Participants will manage their own stalls and handle their own sales so will need to be organised with a cash float, card facilities (if you have them), wrapping paper, tables, etc.
- There will be a participation fee, the amount yet to be determined, to help cover the costs of the marquee.
- Stall size is still to be worked out and will depend on the level of interest and the size of the marquee that we can get.

If you'd be interested in participating in such a market, let us know at admin@canberrapotters.com.au by 24th July (or call the office on 02 6241 160). There's no commitment yet but once we know the level of interest then further details can be worked out.



Diary dates

JULY

FEAST!

22 July, 6 pm

@ Friday Night Supper Club

FEAST! presenter Steve Williams and the winter school participants will not only talk about the process and outcomes of the course but present food on some of the work they have designed and made.

24 July, 4-4.30pm

Student/Teacher Exhibition

Collection of unsold exhibits from the gallery

25 July, 9.30am-12.30pm

Student/Teacher Exhibition

Collection of unsold exhibits from the gallery

EASS 2016

28 July, 6pm

Official exhibition opening

Watson Arts Centre is a Key Arts Organisation supported by the ACT government and run by Canberra Potters' Society. We offer:

Classes for children and adults across all levels of ceramic practice. Workshops, Summer Schools and Kids' Holiday classes are available too.

Studios where tenancy applications are always welcome from emerging and established ceramic artists.

Artist-in-Residence program including studio and residence facilities to national and international visiting artists.

Gallery hosting a ceramic focused exhibition program.

Shop with a range of pottery and ceramics to suit all tastes and budgets.

The gallery and shop are open Thursday to Sunday 10am–4pm and most public holidays.

For further information on all programs, events and available facilities please visit

canberrapotters.com.au

Exhibitions

Hsin-Yi Yang & Peng Qian
School of Art Gallery
Until 9 July
Tue-Fri 10.30-5pm

Last chance to catch CPS members Hsin-Yi (Julia) Yang and Peng Qian graduate show at the School of Art Gallery. The scale of the work is breathtaking.

Hsin-Yi Yang, Mix and Match
Craft ACT Gallery, Crucible Showcase
27 May-9 July
Opening Thursday 26 May 6pm

Canberra Potters Society – Craft ACT Award Winner Hsin-Yi Yang presents her interlocking ceramic objects with playful texture and colour that appeal to the child within.

CPS Student/Teacher Exhibition
Watson Arts Centre Gallery
7-24 July
Thurs to Sun 10am-4pm

Presentation of awards 2pm Sunday 10 July after the official opening of the Seniors Pottery for All Exhibition (see below)

This annual event is our opportunity to celebrate the skills and creativity of the many students, adults and children, who attend pottery classes at CPS. Congratulations to everyone who has submitted work. It can be quite daunting putting your work on public display so participating in this exhibition is not mandatory. We leave



Anne Cawsey; Mr W. Rabbit, Secret Agent and Supernatural Mayan Rabbit Scribe with Codex



L-R: Gail Weatherly, Paul Brown, Deidre McFarlane, Andrew Duncan

it up to the students to decide when they feel ready to exhibit but this year we have a first – a number of Georgie Bryant's introductory class students have submitted work, and how good is it! These lovely exhibits show just what can be achieved in a seven-week course. As always, accompanying the student exhibits are works by our wonderful teaching staff.

Seniors 'Pottery for All' Exhibition
Watson Arts Centre Gallery
7-24 July

Thurs to Sun 10am-4pm
Official opening 2pm Sunday 10 July

CPS and the ACT Government jointly funded (through 2015-16 Participation (Seniors) Grant) ran pottery classes for seniors. The program ran over two terms and was a fantastic success. The exhibition will run concurrently with the Student/Teacher Exhibition.

We're delighted to show just what can be achieved in an eight-week course as students in Suzanne Fox's and Maryke Henderson's 'Pottery for All' seniors' classes present a group showing of some of their work. Just like the students in Georgie Bryant's introductory courses exhibiting in the Student/Teacher exhibition, these exhibits show the wonderful things that can be achieved in just a short time with dedicated, experienced teachers.

EASS 2016
Watson Arts Centre Gallery
28 July to 21 August
Thurs to Sun 10am-4pm
Official opening 6pm Thurs 28 July

2015 ANU ceramics graduates Sue Hewat, Mahala Hill, Alya Khan, Anna-Maree O'Neill and Eden Reni make EASS 2016 the 14th EASS exhibition

presented by CPS through the ANU's Emerging Artist Support Scheme.

Opportunities

Queanbeyan-Palerang Regional Art Award 2016

Delivery of exhibits 20 July

Over \$4000 in cash and prizes. An invitation to all artists and craftspeople who reside in the Queanbeyan-Palerang, Cooma Monaro or Yass Valley Local Government Areas to enter the Queanbeyan-Palerang Regional Council Regional Art Awards. This year the Queanbeyan-Palerang Regional Council is excited to announce a creative partnership with Form Studio which will see one talented artist win the Form Studio Gallery Award for Professional Practice valued at \$2000.

Online entry form and further details at qcc.nsw.gov.au/regionalartaward

Clearwater Sculpture Prize 2016
Entry forms by Fri 29 July

Queanbeyan-Palerang Regional Council is calling all creative minds and crafty souls to put their minds into gear for the \$7,500 Clearwater Sculpture Prize. The third annual Clearwater Sculpture Prize will be held on the banks of the Queanbeyan River during the Queanbeyan River Festival on 28-30 October. Entry forms can be submitted until Friday 29 July 2016.

Online entry form and further details at qcc.nsw.gov.au/clearwatersculptureprize2016

Winery commission opportunity

Dan Corkery runs a small wine making concern in Murrumbateman. He would love to try and make a Roman-style red wine, which requires the procurement of a terracotta amphorae, one for storage (versus storage in oak barrels) and some for "bottling". It would need his winemaking logo on the front, be made out of food safe terracotta (i.e. no lead glazes) and be able to be fitted with a cork lid. Happy to pay expenses (and provide some wine in exchange).

dan.corkery@defence.gov.au or 0419 565 985.

In 2015 the Members' Exhibition was supported by

